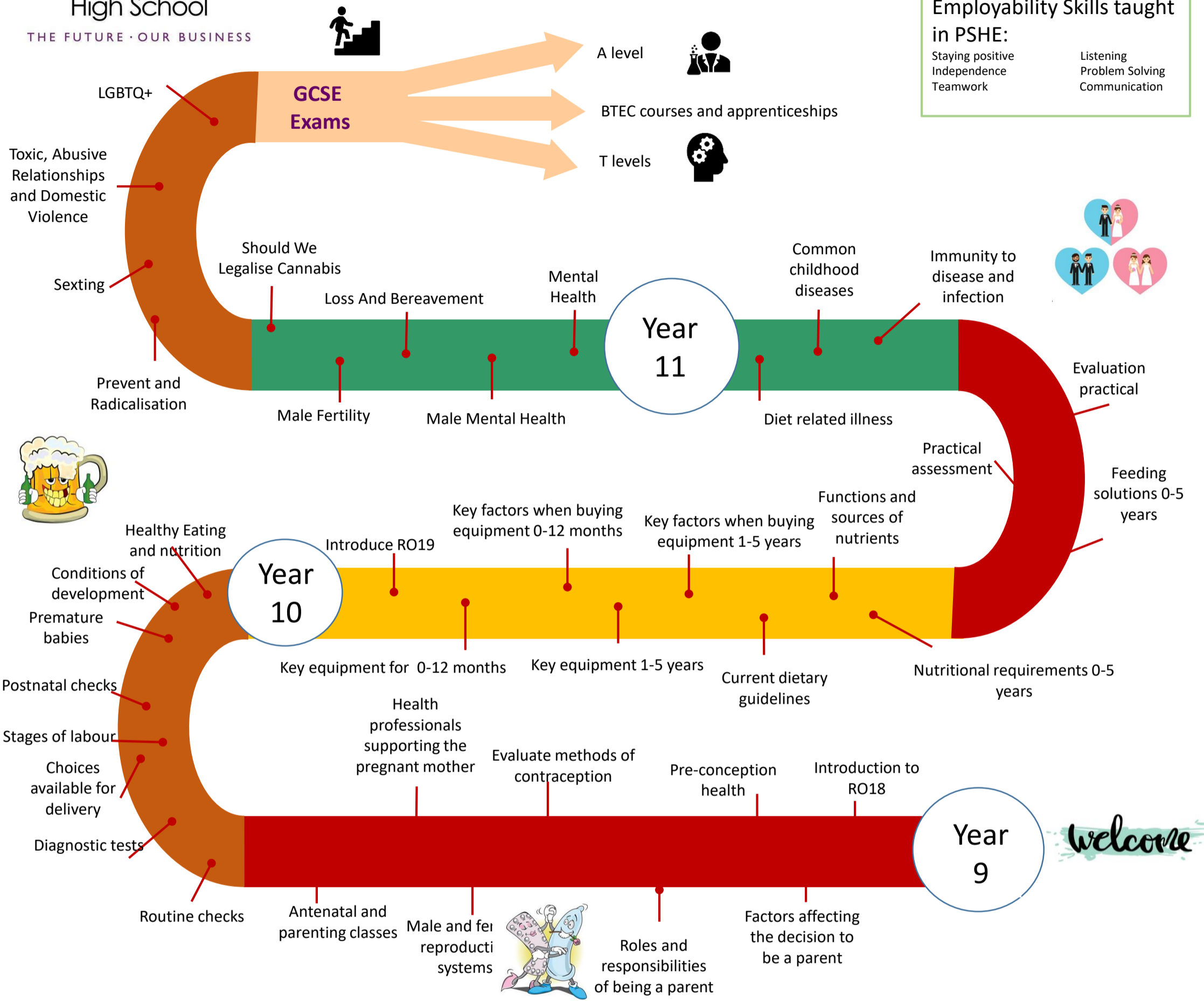


Stowmarket High School Child Development Learning Journey

Employability Skills taught in PSHE:

- Staying positive
- Independence
- Teamwork
- Listening
- Problem Solving
- Communication



Units	Assessment method	GLH	J818 Certificate (120 GLH)
R018: <i>Health and well-being for child development</i>	Written paper OCR-set and marked 1 hour and 15 minutes – 80 marks (120 UMS) Learners answer all questions	60	M [±]
R019: <i>Understand the equipment and nutritional needs of children from birth to five years</i>	Centre-assessed tasks OCR-moderated Approx. 7-10 hours – 60 marks (60 UMS)	30	M*
R020: <i>Understand the development of a child from birth to five years</i>	Centre-assessed tasks OCR-moderated Approx. 7-10 hours – 60 marks (60 UMS)	30	M*

Key : M = mandatory unit