

Stowmarket High School Health & Social Care(OCR) Learning Journey

The 2 year groups will be completing the same coursework alongside each other, so 2 learning journeys are necessary to work in conjunction.

Opportunity to resubmit R033 & 35



Exam in June

R035 submit in June for most

R035 complete & submit for some:
Exam in January

Revision R032

Unit R033: complete @Easter

Topic Area 2 end of unit test

Topic Area 2: Person centred values

Topic Area 1 end of unit test:

Topic Area 1: The rights of service users in HSC settings

Topic Area 2: Impact of life events and sources for support

Topic Area 1: Key milestones of development through life stages

Topic Area 4 : Protecting service users and providers

Unit R033: submit June series

Topic Area 3 end of unit test

Topic Area 3: Effective communication skills

R032 Revision

Topic Area 2: Factors influencing health

Topic Area 1: current public Health issues

Year 11

Year 10

Unit R032: principles of care

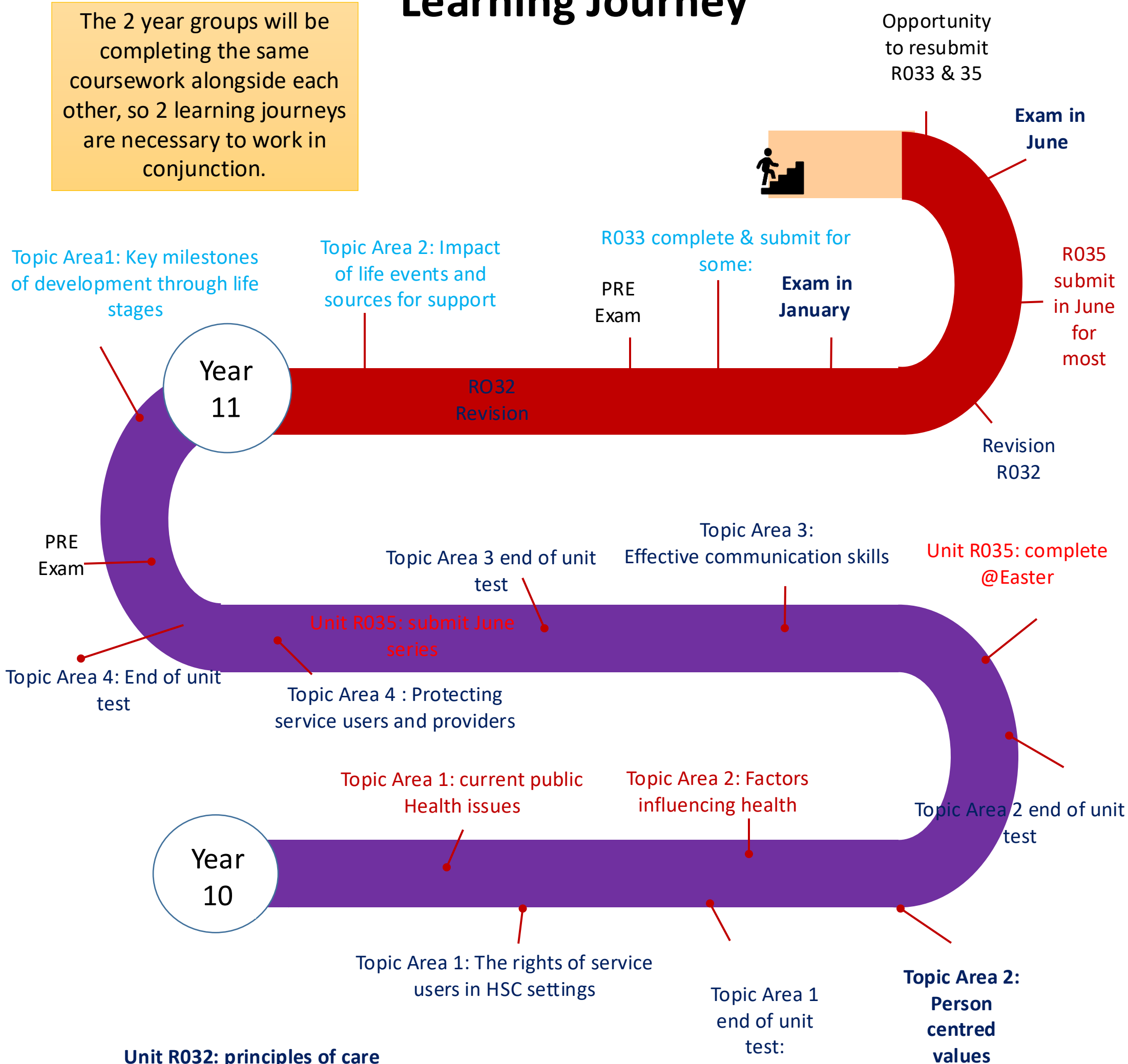
Unit R033: Life stages

Unit R035: Health Campaign



Stowmarket High School Health & Social Care(OCR) Learning Journey

The 2 year groups will be completing the same coursework alongside each other, so 2 learning journeys are necessary to work in conjunction.



Opportunity to resubmit R033 & 35

